

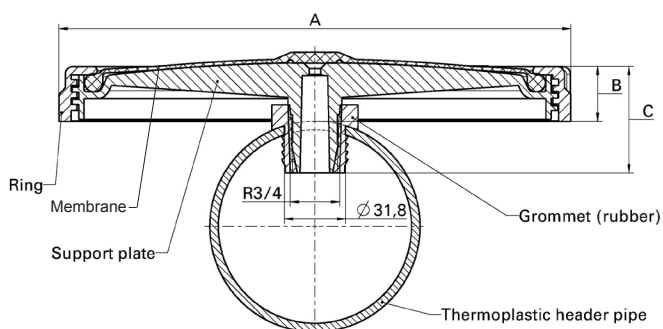


Dimensions

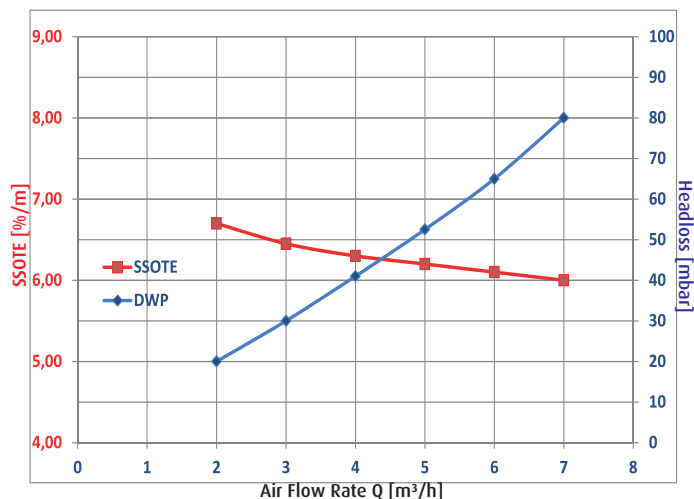
Material	Diameter total/ effective	Overall height membrane top of tube	Orifice	Thread
F053	268/218 mm	30 mm	6 mm	R 3/4"
F057	268/218 mm	30 mm	6 mm	R 3/4"
Silicone	268/218 mm	30 mm	6 mm	R 3/4"

- Shutdown of operation is highly recommended for air flow rates lower than minimum.
- Do not apply overload air flow rate (e.g. cleaning) for more than 10 minutes each day.
- Numbers are for guidance only. Operating diffusers at too high or too low an airflow rate may reduce lifetime or performance. See Technical Report 'Membrane Fouling Issues' for details.

Installation Drawing



SSOTE and headloss for HD 270 F053



Height	Perforated Area	Air flow rate at standard operating conditions	max overload/maintenance air flow rate
60 mm	0,037 m²	2 - 6 m <sub>N</sub> <sup>3</sup> /h	10 m <sub>N</sub> <sup>3</sup> /h

Material	Operating temperature Air	Operating temperature Water	Operating mode	Application
F053	5 - 60 °C	5 - 30 °C	intermittent / continuous	municipal waste water
F057	5 - 60 °C	5 - 30 °C	intermittent / continuous	municipal waste water
Silicone	5 - 80 °C	5 - 30 °C	intermittent / continuous	municipal waste water

Connectors to header pipe

	Colour code	Permitted wall thickness of header tube	Diameter of straight-drilled hole	Material
Universal saddle	black	4 - 8 mm	32 mm	EPDM 75 ± 5 Shore A
PVC-Saddle 90 mm	grey/white	2 mm	35 mm	PVC
PVC-Saddle 110 mm	grey/white	2 mm	35 mm	PVC



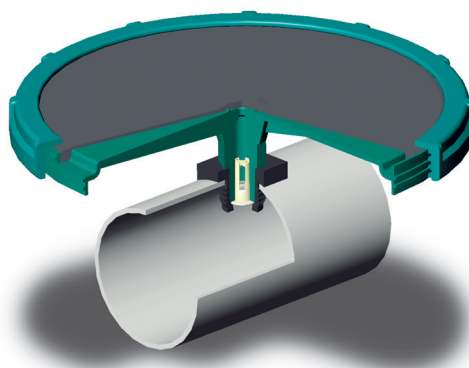


## Membrane Materials

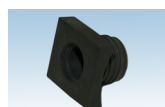
Material		EPDM F053	EPDM F057	Silicone
Colour		black	black	green
Polymer		33 %	59 %	50 %
Carbon black		31 %	28 %	0 %
Plasticiser		33 %	7 %	0 %
Others		3 %	6 %	50 %
Density	DIN EN ISO 1183-1	1,08 ±0,03 g/m <sup>3</sup>	1,07 ±0,03 g/m <sup>3</sup>	1,16 ±0,03 g/m <sup>3</sup>
Tensile strength	DIN 53504	> 10 MPa	> 8 MPa	> 9 MPa
Elongation at break	DIN 53504	> 400%	> 450%	> 600%
Tear strength	DIN EN ISO 34-1	> 7 N/mm	> 6 N/mm	> 35 N/mm
Hardness	DIN ISO 7619-1	53 ± 5 Shore A	60 ± 5 Shore A	60 ± 5 Shore A
Tension set	DIN ISO 2285, 100% Elongation; 24 h, RT	< 7%	< 7%	< 7%
Ozone resistance	DIN ISO 1431-1 (500ppb)	no cracks	no cracks	no cracks

## Other Materials

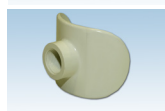
Disc	Colour	Additional Colours	Logo
PP 30% GF	black	minimum quantity 5,000+	upon request 5,000+



## Accessories



Rubber Saddles



PVC Saddles



Check Valve



Clamp Adapters  
(Round Headers)

**Jäger Umwelt-Technik GmbH & Co. KG**  
 Ruscheplattenstraße 14  
 31137 Hildesheim  
 Germany  
 Phone +49 (0) 5121 - 9138 900  
 Fax +49 (0) 5121 - 9138 999  
 www.jaeger-envirotech.com  
 info@jaeger-envirotech.com

**Jaeger Rubber and Plastics (Shenzhen) Ltd.**  
 1/F, No. A9 Factory Building  
 Silicon Valley – Automobile Industry Park  
 Guanlan, Baoan, Shenzhen,  
 China 518110  
 Phone: +86 755 29832412  
 Fax: +86 755 29832413  
 www.jaeger-shenzhen.cn  
 info@jaeger-shenzhen.cn

### Disclaimer

This information is based on our present state of knowledge and is intended to provide non-legally binding general notes on our products and their uses. It should not therefore be construed as guaranteeing specific properties of the products described or their suitability for a particular application. Any existing industrial property rights must be observed. Errors excepted. We disclaim any liability for information contained in this Data Sheet and for product information. Contact Jaeger for a detailed lay-out & design for your individual plant.